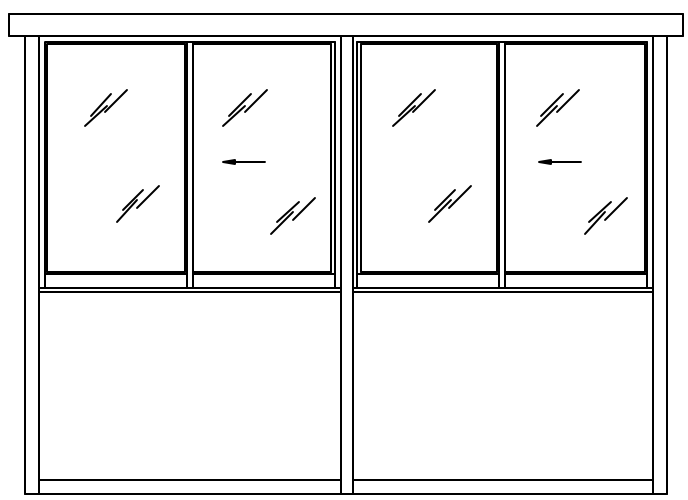
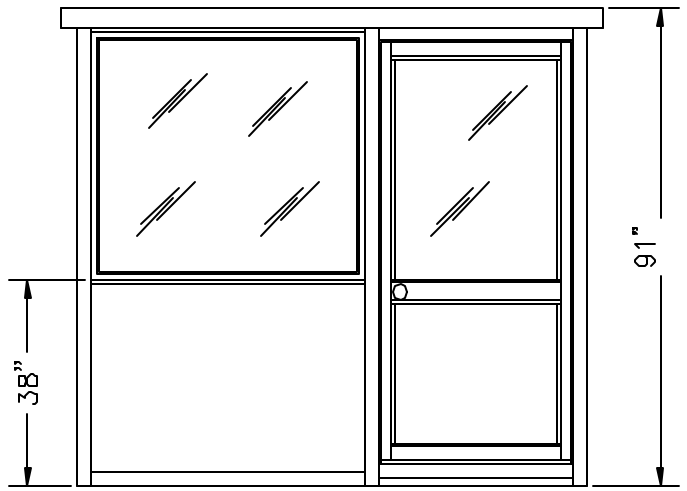


* MODEL 14496SL- 147 1/4"x93 7/8" A
 PLAN VIEW
 (N.T.S.)



NOTE . BUILDING
 HEIGHT WITHOUT
 EXTERIOR ROOF- 87 7/8" ELEVATION A



ELEVATION B

STANDARD ITEMS FOR A 12096SW DURALUMINUM BUILDING

- ① — 100 AMP SINGLE PHASE 12 CIRCUIT MAIN LOAD CENTER
- ② — 115V DUPLEX, 230V OUTLET
- ③ — 80 WATT LIGHT FIXTURE
- ④ — 3" OVERHANG EXTERIOR ROOF (OPTIONAL)
 (REFER TO DURALUMINUM SPECIFICATIONS
 FOR TYPICAL CONSTRUCTION)

PORTA-KING BUILDING SYSTEMS

4133 SHORELINE DRIVE EARTH CITY, MISSOURI 63045
 1-800-456-5464 FAX 314-291-2857 www.portaking.com

TITLE	DURALUMINUM MODEL 12096SW
-------	---------------------------