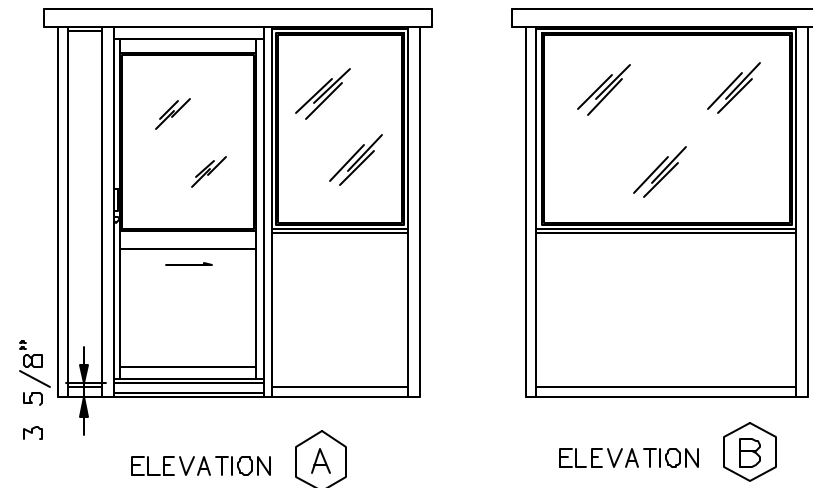
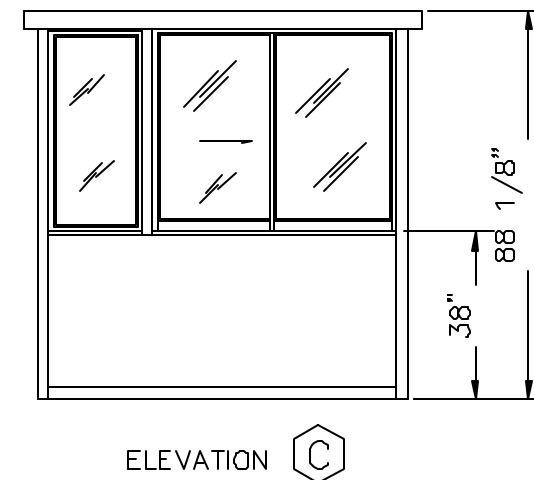


IMPORTANT NOTE— VERIFY BOOTH DESIGN IS COMPATIBLE WITH ON SITE CONDITIONS FOR PROPER ACCESSIBILITY.

PLAN VIEW (N.T.S.)



CASHIER WINDOW AVAILABLE IN SLIDING DOOR OR WALL.



STANDARD ITEMS FOR A DISABLED ACCESSIBLE 8866SL DURALUMINUM BUILDING (REFER TO DURALUMINUM SPECIFICATIONS FOR TYPICAL CONSTRUCTION)

- ① — 100 AMP SINGLE PHASE 12 CIRCUIT MAIN LOAD CENTER
- ② — 115V DUPLEX, 230V OUTLET
- ③ — 40 WATT LIGHT FIXTURE W/SWITCH
- ④ — 22" DEEP SHELF
- ⑤ — 3" OVERHANG EXTERIOR ROOF (OPTIONAL)

STANDARD FEATURES DESIGNED INTO BOOTH TO MEET ADA GUIDELINES.



- * MANEUVER WITHIN BOOTH— 60" DIAMETER
- * DOOR CLEARANCES— 32" CLEAR OPENING, 1/2" HIGH THRESHOLD
- * SHELF— 32" A.F.F.
- * CASHIER WINDOW— 32" A.F.F.
- * CEILING HEIGHT— 80"

(ACCESSIBLE ROUTE TO BOOTH— BOOTH CAN BE DESIGNED TO MEET ON SITE CONDITIONS, EXAMPLE; DOOR LOCATION AND THRESHOLD HEIGHT)

PORTA-KING BUILDING SYSTEMS

4133 SHORELINE DRIVE EARTH CITY, MISSOURI 63045
1-800-456-5464 FAX 314-291-2857 www.portaking.com

TITLE

DURALUMINUM MODEL DA8866SL