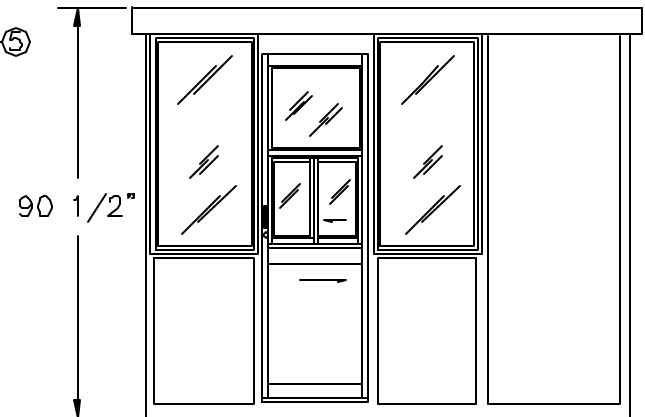
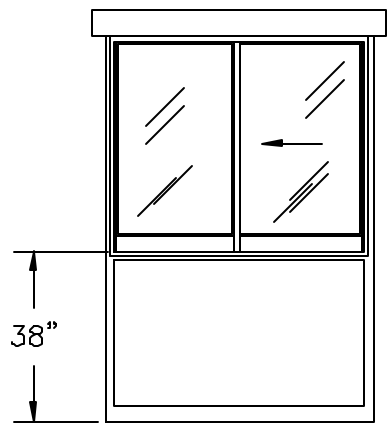


PLAN VIEW  
(N.T.S.)

DOORS AVAILABLE BOTH SIDES—SUFFIX DSL



ELEVATION A



ELEVATION B

STANDARD ITEMS FOR A PC-R95CSL STEEL BUILDING

- ① — 100 AMP SINGLE PHASE 12 CIRCUIT MAIN LOAD CENTER
- ② — 115V DUPLEX, 230V OUTLET
- ③ — 40 WATT LIGHT FIXTURE
- ④ — 22" DEEP SHELF
- ⑤ — 3" OVERHANG EXTERIOR ROOF (OPTIONAL)
- \* HORIZONTAL SLIDING CASHIER WINDOW  
(REFER TO DURASTEEL SPECIFICATIONS FOR TYPICAL CONSTRUCTION)

*PORTA-KING* BUILDING SYSTEMS

4133 SHORELINE DRIVE      EARTH CITY, MISSOURI 63045  
1-800-456-5464      FAX 314-291-2857      www.portaking.com

TITLE	DURASTEEL MODEL PC-R95CSL
-------	---------------------------