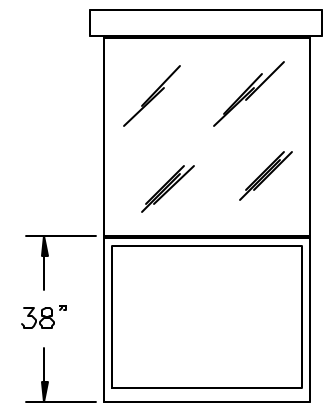


ELEVATION A



ELEVATION B

DOORS AVAILABLE BOTH SIDES-SUFFIX DSL

STANDARD ITEMS FOR A PC-S64CSL STEEL BUILDING

- ① — 100 AMP SINGLE PHASE 12 CIRCUIT MAIN LOAD CENTER
- ② — 115V DUPLEX, 230V OUTLET
- ③ — 40 WATT LIGHT FIXTURE
- ④ — 22" DEEP SHELF
- ⑤ — 3" OVERHANG EXTERIOR ROOF (OPTIONAL)
- \* HORIZONTAL SLIDING CASHIER WINDOW
- \* SATELLITE GLAZING ON BOTH ENDS (REFER TO DURASTEEL SPECIFICATIONS FOR TYPICAL CONSTRUCTION)

*PORTA-KING* BUILDING SYSTEMS

4133 SHORELINE DRIVE EARTH CITY, MISSOURI 63045  
 1-800-456-5464 FAX 314-291-2857 www.portaking.com

TITLE	DURASTEEL MODEL PC-S64CSL
-------	---------------------------