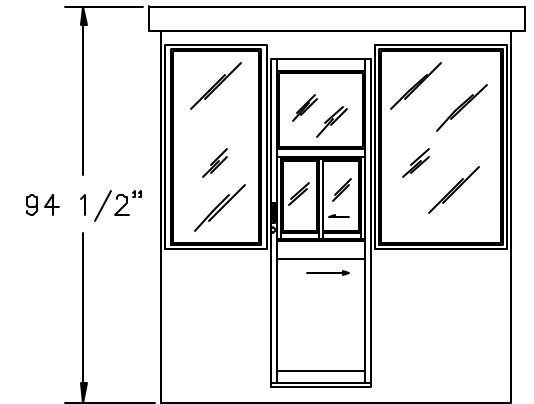


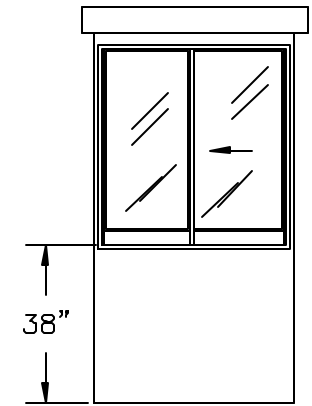
DOORS AVAILABLE BOTH SIDES—SUFFIX DSL

STANDARD ITEMS FOR A 74CSL STEEL BUILDING

- ① — 100 AMP SINGLE PHASE 12 CIRCUIT MAIN LOAD CENTER
 - ② — 115V DUPLEX, 230V OUTLET
 - ③ — 40 WATT LIGHT FIXTURE
 - ④ — 22" DEEP SHELF
 - ⑤ — 3" OVERHANG EXTERIOR ROOF (OPTIONAL)
- * HORIZONTAL SLIDING CASHIER WINDOW
(REFER TO DURASTEEL SPECIFICATIONS FOR TYPICAL CONSTRUCTION)



ELEVATION A



ELEVATION B

PORTA-KING BUILDING SYSTEMS

4133 SHORELINE DRIVE EARTH CITY, MISSOURI 63045
1-800-456-5464 FAX 314-291-2857 www.portaking.com

TITLE	DURASTEEL MODEL 74CSL
-------	-----------------------