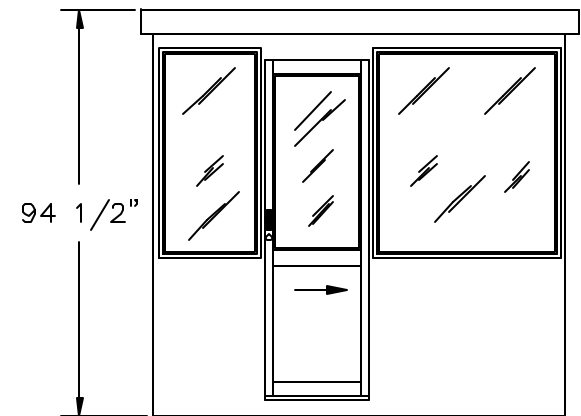
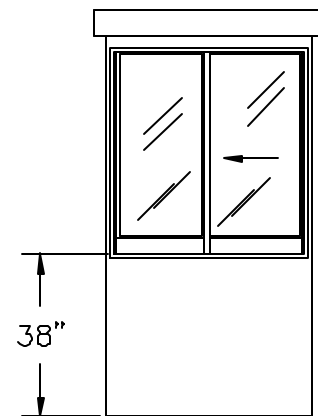


PLAN VIEW  
(N.T.S.)

DOORS AVAILABLE BOTH SIDES—SUFFIX DSL  
CASHIER WINDOW AVAILABLE  
IN SLIDING DOOR—SUFFIX CSL



ELEVATION A



ELEVATION B

STANDARD ITEMS FOR A 84SL STEEL BUILDING

- ① — 100 AMP SINGLE PHASE 12 CIRCUIT MAIN LOAD CENTER
- ② — 115V DUPLEX, 230V OUTLET
- ③ — 40 WATT LIGHT FIXTURE
- ④ — 22" DEEP SHELF
- ⑤ — 3" OVERHANG EXTERIOR ROOF (OPTIONAL)  
(REFER TO DURASTEEL SPECIFICATIONS  
FOR TYPICAL CONSTRUCTION)

*PORTA-KING* BUILDING SYSTEMS

4133 SHORELINE DRIVE EARTH CITY, MISSOURI 63045  
1-800-456-5464 FAX 314-291-2857 www.portaking.com

TITLE	DURASTEEL MODEL 84SL
-------	----------------------